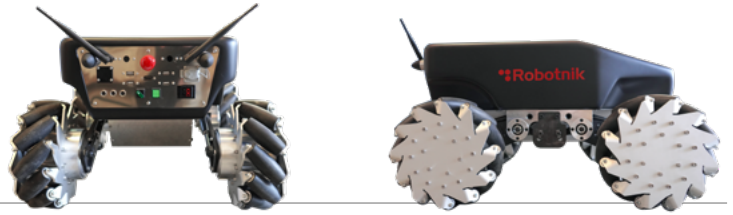


SUMMIT-XL

AUTONOMOUS MOBILE ROBOT (AMR)



VERSATILITY & HIGH MOBILITY

INDOOR & **OUTDOOR**
APPLICATIONS

TWO KINEMATIC CONFIGURATIONS
WITH **RUBBER** OR **MECANUM**
WHEELS

RESEARCH & DEVELOPMENT

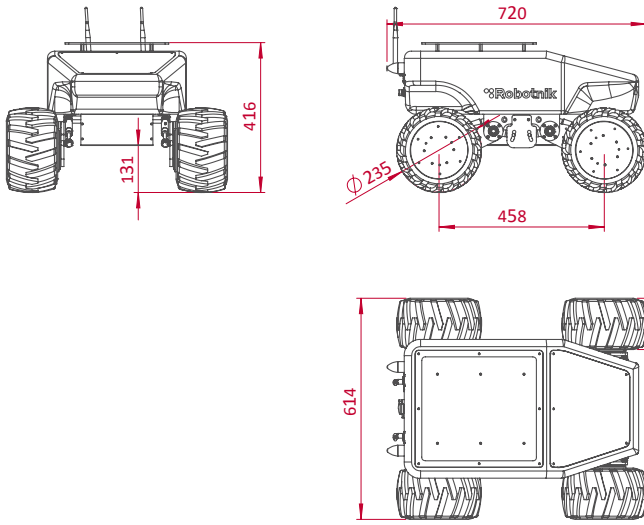
SURVEILLANCE

MILITARY

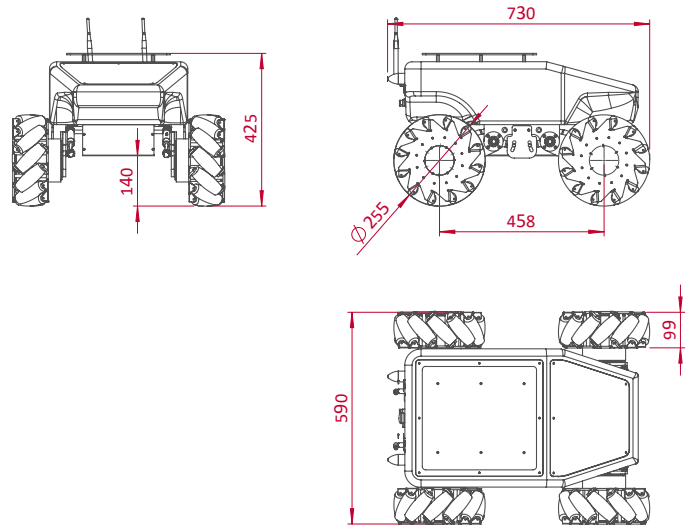
REMOTE MONITORING

ACCESS TO HAZARDOUS AREAS





Rubber wheels



Mecanum wheels

TECHNICAL SPECIFICATIONS

MECHANICAL

- Dimensions **720 x 614 x 416 mm**
(Rubber wheels)
- Weight **65 Kg**
- Load capacity **65 Kg**
- Speed **3 m / s**
- Ambient **Indoor / Outdoor**
- Autonomy **10 h continuous motion**
- Batteries **LiFePO₄ 15Ah@48V**
- Traction system **4 wheels**
- Traction motors **4 x 500 W
brushless servomotors**
- Temperature range **0° to +50°C**
- Max. slope **80 %**

CONTROL

- Controller **Open architecture ROS
Integrated PC with Linux**
- Communication **WiFi 802.11n**
- Connectivity **Internal: USB, RS232 and GPIO
External: USB, RJ45, 12 VDC
and battery**